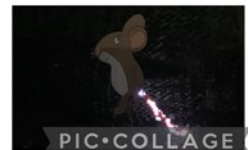


## Welcome to our NEWSLETTER 01.12.23



## Autumn Outdoor Learning Challenge

Your challenge for this week is to enjoy the snow! Make a snowman, snow angel or go sledging. What can you do with ice? We'd love to see your cold weather day fun on Evidence for Learning.



## Thank you!

A huge thank you to all the staff and children for making our Lumiere Wow Day such a fantastic event.

Thank you to those who bought raffle tickets. We raised £360 for school funds.

Congratulations to our winners of the raffle:

Oliver Wolstenholme &  
Noah Draggfy-Brown



## Christmas Jumper Day—Friday 15th December

We know this can be an expensive time of year, so please don't go out specially to buy a jumper. You could try your local charity shop or decorate one of your child's jumpers with tinsel or baubles! If they prefer, your child can wear their favourite clothes instead.

## Medication in school

Polite reminder that children must have a signed medication form sent in as staff cannot administer medication without it.

## Magic Breakfast

Evergreen is part of the Magic Breakfast scheme. The charity's aim is to ensure that no child starts the day too hungry to learn. We are pleased to offer a healthy school breakfast, available to all! This includes a range of cereals, toast or bagels.

## Names on clothing

We regularly have items of clothing which are lost around school. To help us identify who the clothing belongs to and return items to their rightful owners, could we please ask that all items of clothing are labelled with your child's name.

## Evidence for Learning

Please check the EfL app regularly to see all the lovely photos and videos of your child's learning each week. If you are having problems logging on, please contact Claire:

conions@evergreenprimary.co.uk

Look out for more Evidence for Learning workshops for parents in the Spring Term.

## Sickness

Please remember that children who have vomited or have had diarrhoea should remain off school for 48 hours from the last episode. This is following government guidance to ensure your child is fully fit before returning to school and also to help stop the spread of illness to children and staff. For more information, click on this link:

<https://www.gov.uk/government/publications/health-protection-in-schools-and-other-childcare-facilities/managing-specific-infectious-diseases-a-to-z#diarrhoea-and-vomiting-gastroenteritis>



# Wellbeing



## MATP

Blue 4 have been developing their Physical Development using a new programme called MATP. What is MATP? The Special Olympics Motor Activity Training Programme is a unique programme specifically designed for athletes of all ages with Profound and Multiple Learning Difficulties (PMLD) or complex needs. MATP provides genuine opportunities for training and competition for individuals with PMLD or complex needs. Opportunities are realistic and tailored to the individual. It focuses on their abilities and enables athletes to work and showcase motor skills and sporting achievements that are relevant to them.

Like to get involved in MATP? For more information on community support/care provision. Please contact us on [matp@sogb.org.uk](mailto:matp@sogb.org.uk)

IT IS OK TO...

BE YOURSELF

NOT KNOW EVERYTHING

SAY NO

ASK FOR HELP

HAVE BAD DAYS

MAKE MISTAKES

NOT BE OK

START OVER





### School holidays for the 2023/2024 academic year

Holiday	Closing Date	Date Re-opens for Teaching Purposes
Summer 2023 (6 weeks 2 days)	Friday 21 July 2023	Wednesday 6 September 2023
Autumn Half-Term 2023 (1 week)	Friday 27 October 2023	Monday 6 November 2023
Christmas 2023 (2 weeks 1 day)	Tuesday 19 December 2023	Thursday 4 January 2024
Spring Half-Term 2024 (1 week)	Friday 16 February 2024	Monday 26 February 2024
Easter 2024 (2 weeks 3 days)	Thursday 28 March 2024	Wednesday 17 April 2024
May Bank Holiday (1 day)	Friday 3 May 2024	Tuesday 7 May 2024
Summer Half-Term 2024 (1 week)	Friday 24 May 2024	Monday 3 June 2024
Summer 2024	Tuesday 23 July 2024	TBA

**Inset days 4<sup>th</sup> & 5<sup>th</sup> September 2023**  
**3<sup>rd</sup> January 2024**  
**15<sup>th</sup> & 16<sup>th</sup> April 2024**

## Dates for Christmas

Tuesday 5<sup>th</sup> December at 10 am Christmas Play for Blue 1, 2, 3, 4

Tuesday 5<sup>th</sup> December at 11 am Christmas Play for Red 1, 2, 3, 4

Wednesday 6<sup>th</sup> December at 10 am – Christmas Play for Purple 1, Red 5, 6, Yellow 1, 2, 6 and Orange 1, 2, 3, 4

Thursday 7<sup>th</sup> December at 10 am – Carol Concert for Yellow 3, 4, 5

Tuesday 12<sup>th</sup> December , 4.00—6.30pm—Evergreen Christmas Fair

Thursday 14<sup>th</sup> December – Christmas dinner (wear your Christmas Jumper!)

Friday 15<sup>th</sup> December – Christmas Jumper Day and a visit from Farmer Christmas on his tractor!

Monday 18<sup>th</sup> December – Parties for Blue 1, 2, 3, 4 and Red 1, 2, 3, 4, 5, 6

Tuesday 19<sup>th</sup> December – Parties for Purple 1, Yellow 1, 2, 3, 4, 5, 6 and Orange 1, 2, 3, 4